

Ullman Sails Long Beach Race Week

June 25 - 27, 2010

Alamitos Bay Yacht Club & Long Beach Yacht Club

Long Beach, California USA

<http://www.lbrw.org>



SAILING INSTRUCTIONS

The Organizing Authorities for Long Beach Race Week will be the Alamitos Bay Yacht Club (ABYC), 7201 East Ocean Blvd, Long Beach, CA. 90803 and the Long Beach Yacht Club (LBYC), 6201 Appian Way, Long Beach, CA. 90803.

1. RULES

- 1.1. The Regatta will be governed by the "rules" as defined in The Racing Rules of Sailing (RRS).
- 1.2. Competitors are reminded that under the preamble of Part 2 of the RRS boats racing must comply with Rule 9 of the Inland Navigation Rules (72 COLREGS) when they meet other marine traffic.
- 1.3. For PHRF classes, the Regatta will be a Category 4 event as defined by PHRF of Southern California.
- 1.4. For PHRF classes, the Marine Industry Racer (MIR) rule of PHRF of Southern California will not apply to this regatta.

2. ADVERTISING

- 2.1. For boats of the Catalina 37 class, advertising may not be added to or removed from any equipment supplied with the boat from Long Beach Yacht Club Sailing Foundation.

3. ADDITIONAL IDENTIFICATION

- 3.1. Event Bow Stickers shall be attached to both sides of the boat's hull at all times while racing. For those boats not issued bow numbers, the stickers are to be mounted approximately 6-10 inches below deck level and 8-14 inches aft of the bow. For those boats issued bow numbers (SI 3.2) instructions for attaching the Event Bow Stickers will be included in the Skipper's Package.
- 3.2. Bow Numbers may be required for classes with ten (10) or more boats. Each boat in this class will be assigned a bow number. These bow numbers shall be displayed on both sides of the bow approximately 6-10 inches below deck level and between 8-14 inches aft of the bow.

- 3.3. Boats failing to display Event Bow Stickers or Bow Numbers may be subject to protest by the Race Committee only.

4. NOTICES TO COMPETITORS

Notices to competitors will be posted on the Official Regatta Notice Boards located at LBYC on the glass sliding doors and windows of the Regatta Room which is located on the East face of the club, bottom floor overlooking the channel.

5. CHANGES TO SAILING INSTRUCTIONS

Any change to the sailing instructions will be posted before 0900 on the day it will take effect, except that any change to the schedule of races will be posted by 2000 on the day before it will take effect.

6. SIGNALS MADE ASHORE

- 6.1. Signals made ashore will be displayed on the LBYC flag pole. When a signal is displayed over the appropriate Racing Area letter flag it applies to that Racing Area only.
- 6.2. When flag AP is displayed ashore, '1 minute' is replaced with 'not less than sixty (60) minutes' in race signal AP. Boats are requested not to leave the harbor until this signal is lowered.
- 6.3. The Race Committee will broadcast its intent to the three Racing Areas on the VHF Channels designated in SI 24.1 at 1130.

7. SCHEDULE

- 7.1. Registration at LBYC:
Thursday June 24, 2010 From 1200 to 1830
Friday June 25, 2010 From 0800 to 1000
- 7.2. Measurement, Inspection and Crew Weigh-In at LBYC:

Ullman Sails Long Beach Race Week

Thursday June 24, 2010 From 1200 to 1800
Friday June 25, 2010 From 0800 to 1000

7.3. Competitors' Briefing at LBYC:

Friday June 25, 2010 From 1030 to 1100

7.4. Dates of Racing:

Friday June 25, 2010 1st Warning 1255
Saturday June 25, 2010 1st Warning 1155
Sunday June 27, 2010 1st Warning 1155

8. CLASS FLAGS

Class flags will be solid color flags. Class flag colors will be posted by 0900 on the day it will take effect.

9. RACING AREAS

9.1. Attachment A – Racing Areas shows the location of Racing Areas A, B, and C.

9.2. Assignments of classes to Racing Areas will be posted by 0900 on the day it will take effect.

10. THE COURSES

10.1. For **One-Design**, and **PHRF**, the diagrams in "Attachment B – Buoy Racing Courses" show the courses, including the course signals, approximate angles between legs, the order in which marks are to be passed, and the side on which each mark is to be left. The course lengths will be adjusted to provide appropriate amounts of racing.

10.2. For the **Random Leg Fleet**, the diagrams in "Attachment C – Random Leg Courses" show the courses, including the course signals, the order in which marks are to be passed, and the side on which each mark is to be left.

10.3. The course designation will be displayed on a placard from the Race Committee Signal Boat.

10.4. No later than the warning signal, the Race Committee Signal Boat will display the approximate compass bearing and distance to the first mark.

10.5. When there is a gate, boats shall sail between the gate marks from the direction of the previous mark and round either gate mark.

11. MARKS

11.1. Marks 1, 2, 3S and 3P will be Yellow Inflatable Shapes.

11.2. New marks, as provided in instruction 13, will be Orange Inflatable Shapes.

11.3. The starting and finishing marks will be staffs mounted on whip marks.

12. THE START

12.1. To alert boats that a sequence of starts will begin soon, an orange flag will be displayed with one sound at least four minutes before a warning signal is displayed.

12.2. The starting line will be between staffs displaying orange flags. One end shall and both ends may be on Race Committee Boats. A yellow inflatable mark may be attached to the Race Committee Boat(s) and shall be considered part of the Starting Mark for the purposes of RRS 28 and 31.

12.3. Boats whose warning signal has not been made shall avoid the starting area.

12.4. A boat starting later than 10 minutes after her starting signal will be scored Did Not Start. This changes rule A4.1.

12.5. If when rule 30.1 or 30.2 is in effect any part of a boat's hull crew or equipment is on the course side of the starting line during the one minute before her starting signal and she is identified, the race committee will attempt to broadcast her sail number on the designated VHF channel. Failure to make a broadcast or of a boat to see or hear her recall notification shall not relieve her of her obligation to start correctly and shall not be grounds for redress. A boat's position in the sequence of hailed numbers or broadcast numbers shall not be grounds for redress. This changes rule 62.1(a)

12.6. As a courtesy, the Race Committee will attempt to notify recalled boats by hailing their sail number over the designated VHF channel. (see SI 24.1) Failure of a boat to see or hear her recall notification shall not relieve her of her obligation to start correctly and shall not be grounds for redress. A boat's position in the sequence of hailed numbers or broadcast numbers shall not be grounds for redress.

12.7. For those classes with bow numbers, the Race Committee will attempt to hail each boat by her bow number.

13. CHANGE OF THE NEXT LEG OF THE COURSE

To change the next leg of the course, the race committee will lay a new mark (or move the finishing line) and remove the original mark as soon as practicable. When in a subsequent change a new mark is replaced, it will be replaced by an original mark.

Ullman Sails Long Beach Race Week

14. THE FINISH

- 14.1. The finishing line will be between staffs displaying orange flags. One end shall and both ends may be located on a Race Committee Boat.
- 14.2. In the interest of starting another race in a timely fashion, the Race Committee may assign a finish position to the last finisher(s) in a class provided that the position(s) can be determined in a reasonable manner.

15. PENALTY SYSTEM

- 15.1. Rule 44 is changed so that if an incident occurs outside the *zone* for a rounding or finishing mark the penalty under rule 44.2 – Two-Turns Penalty shall be one turn including one tack and one gybe.
- 15.2. Arbitration of protests involving a rule of Part 2 of the RRS will occur. The arbitration penalty will be a scoring penalty of 40% calculated as provided in rule 44.3(c). See also SI 18 ARBITRATION.

16. TIME LIMITS AND TARGET TIMES

- 16.1. The target time for **One-Design**, and **PHRF** races will be approximately 60 minutes. The target time for **Random Leg Fleet** races will be approximately 180 minutes.
- 16.2. The time limit for the first boat in **One-Design**, and **PHRF** races is two (2) hours. The time limit for the first boat in **Random Leg** races is five (5) hours.
- 16.3. **One-Design**, and **PHRF** boats failing to finish within 30 minutes after the first boat sails the course and finishes will be scored Did Not Finish. This changes rules 35 and A4.1. **Random Leg** boats failing to finish within 90 minutes after the first boat sails the course and finishes will be scored Did Not Finish. This changes rules 35 and A4.1.

17. PROTESTS AND REQUESTS FOR REDRESS

- 17.1. Protest forms are available at Race Headquarters located at LBYC. Protests shall be delivered to Race Headquarters within the protest time limit.
- 17.2. Protest Filing Time will close sixty (60) minutes after the Race Committee Signal Boat for that Racing Area docks.
- 17.3. Notices will be posted within 30 minutes of the protest time limit to inform competitors of hearings in which they are parties or named as witnesses. This will constitute notice to all

parties under rule 63.2. Hearings will normally be heard in the order in which protests and requests for redress are received. See also SI 18 ARBITRATION.

- 17.4. The Race Committee will endeavor to post a list of On-Course Side (OCS) boats or the results before the protest time limit.
- 17.5. Breaches of instructions 2, 3, 12.3, 20, 21, 22, 23 will not be grounds for a protest by a boat. This changes rule 60.1(a). Penalties for these breaches may be less than disqualification if the Protest Committee so decides.
- 17.6. On the last day of the regatta a request for reopening a hearing shall be delivered (a) within the protest time limit if the party requesting reopening was informed of the decision on the previous day; (b) no later than 30 minutes after the party requesting reopening was informed of the decision on that day. This changes rule 66.

18. ARBITRATION

- 18.1. For protests involving an alleged breach of a rule of Part 2, a short arbitration hearing will be held prior to a protest hearing. This changes Part 5, Section B of the RRS.
- 18.2. After a written protest is delivered to the Jury Secretary, one representative from each boat will meet with the arbitrator unless the protestor requests that the protest be withdrawn. No witnesses will be allowed. Protests not resolved by arbitration will be forwarded to the Protest Committee.
- 18.3. A boat that accepts the arbitrator's opinion that she broke a rule of Part 2 shall receive a penalty score of 40% as detailed in Sailing Instruction 15.2 and shall not be penalized further unless she failed to retire when rule 44.1 required her to do so. Any party to an arbitration hearing can accept the arbitration penalty. Arbitration is not available to boats breaking rule 44.1(b).
- 18.4. The acceptance of an arbitrator's opinion or arbitration penalty cannot be grounds for redress or be appealed.
- 18.5. The arbitrator will not be a member of the Jury that hears the protest but will be permitted to observe the testimony given to the Jury and offer testimony. This changes rule 63.3(a).

19. SCORING

- 19.1. **One-Design, and PHRF Fleets:** Seven (7) races are scheduled of which three (3) must be

Ullman Sails Long Beach Race Week

completed to constitute a series for the One-Design, and PHRF fleets.

- 19.2. **Random Leg Fleets:** Three (3) races are scheduled of which one (1) must be completed to constitute a series.
- 19.3. The regatta will be scored as provided in the RRS except that all a boat's race scores will count (i.e. no scores will be excluded).
- 19.4. PHRF Classes will be scored using the base handicaps provided by the PHRF Southern California.
- 19.5. The **PHRF** fleets will be scored using time-on-time scoring. For each boat, the "Time Correction Factor" (TCF) used will be calculated based on the following formula:
 $TCF = 650 / (625 + PHRF)$ where "PHRF" is a boat's base SoCal PHRF handicap.
- 19.6. The **Random Leg** fleet will be scored using PHRF time-on-distance scoring

20. SAFETY REGULATIONS

- 20.1. Check-In at the Race Committee signal boats is not required however, competitors are requested to sail by the stern of the Race Committee Signal Boat, and hail their sail numbers before their warning signal on each day of racing.
- 20.2. Retiring. A boat that retires from a race or does not intend to start a scheduled race shall promptly report this to the Race Committee on station via hailing or the designated VHF channel and receive acknowledgement. If this is not possible she shall promptly report her actions to Race Headquarters on shore.

21. REPLACEMENT OF CREW OR EQUIPMENT

- 21.1. Entrants in classes that have an established crew weight limit and require weigh-ins must have their crews weighed-in by 1000 Friday, June 25, 2010.
- 21.2. In classes that require crew weigh-ins, entrants desiring to substitute crew must have substitute crew members weighed-in prior to 0900 on race day (Saturday and Sunday) at Race Headquarters located at LBYC. A crew substitution card, with the name of the substitute (who meets all requirements) and crew member replaced, must be submitted when being weighed-in and signed by a designated Race Committee official. Crew substitution cards are available at Race Headquarters.

22. SUPPORT BOATS

Media, support and spectator boats shall stay clear of the starting area and shall not interfere in any way with boats racing or with the Race Committee. Media, support and spectator boats shall comply with this instruction and with the oral directives of the Race Committee on the water. Failure to comply may result in the protest and disqualification of a racing boat associated with any offending ancillary boat.

23. HAUL-OUT RESTRICTIONS

Boats shall not be hauled out during the regatta except with and according to the terms of prior written permission of the Competition Chair.

24. RADIO COMMUNICATION

- 24.1. The Race Committee will use the following VHF Channels for communication:
Racing Area A - Channel 68
Racing Area B - Channel 69
Racing Area C - Channel 72
- 24.2. The Race Committee will use the VHF radios to make competitors aware of its intentions, the course to be sailed, starting times, course changes, On Course Side (OCS), postponements, and other information regarding the racing. Failure of the Race Committee to make a broadcast, the timing of a broadcast, or the failure of a boat to hear a broadcast shall not be grounds for redress under Rule 62.1(a).
- 24.3. A boat shall neither make radio or mobile phone transmissions while racing nor receive communications not available to all boats.

25. PRIZES

- 25.1. Daily awards will be presented each day to winners in each established fleet.
- 25.2. Overall series awards will be presented to each established fleet.
- 25.3. The following trophies will be presented to individual boats:

Satarino Boat of the Week

To the class winner whose class featured the closest, most competitive racing for the series

PHRF Boat of the Week

To the PHRF class winner whose class featured the closest, most competitive racing for the series

Catalina 37 National Championship

Winner of the Catalina 37 class

Ullman Sails Long Beach Race Week

Farr 40 West Coast Championship

Winner of the Farr 40 class

J/29 West Coast Championship

Winner of the J/29 class

Open 5.70 West Coast Championship

Winner of the Open 570 class

Schock 35 Pacific Coast Championship

Winner of the Schock 35 class

Cal 25 Carl Kindrich Perpetual Trophy

Winner of the Cal 25 class

Kent Golison Family Trophy

Highest placing boat in the regatta that is sailed by at least three members of an immediate family

Travel Trophy

Boat owner who has traveled the farthest (based on hometown)

Yacht Club Challenge

The yacht club whose team has the lowest combined score

26. DISCLAIMER OF LIABILITY

Competitors participate in this regatta entirely at their own risk. See rule 4, Decision to Race. The Organizing Authorities will not accept liability for material damage or personal injury or death sustained in conjunction with or prior to, during or after this regatta.

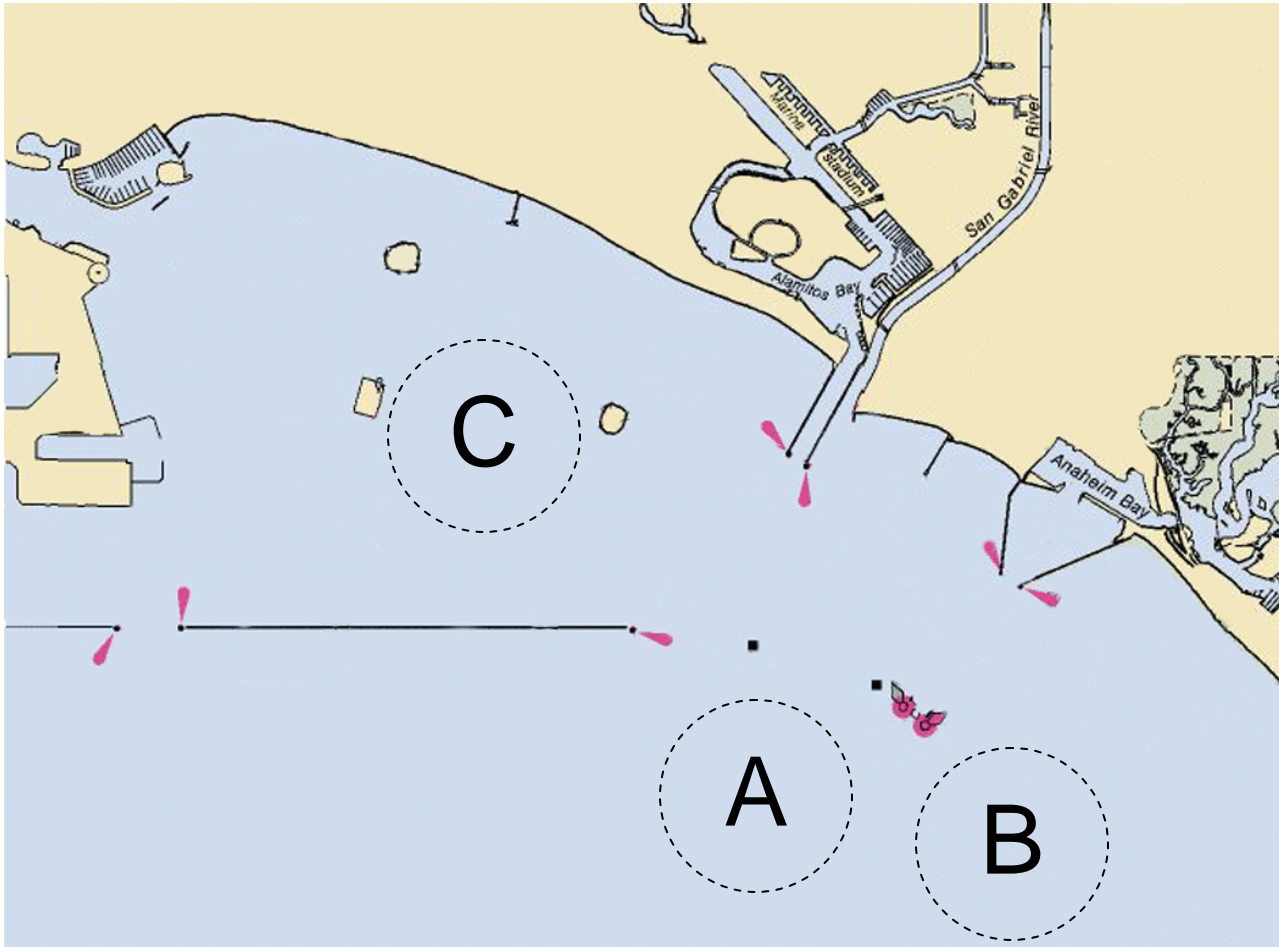
* Informational note: The United States Coast Guard (USCG) requires that all vessels carry a USCG approved personal floatation device for each member of the crew on a boat.

27. AMENDMENTS TO THESE INSTRUCTIONS

The Organizing Authorities reserve the right to amend these instructions. Any amendments of these instructions made prior to June 20, 2010 will be posted on the Race Week web site. Amendments made after June 20, 2010 will be posted on the Official Notice Board and copies will be available at Race Headquarters.

Ullman Sails Long Beach Race Week

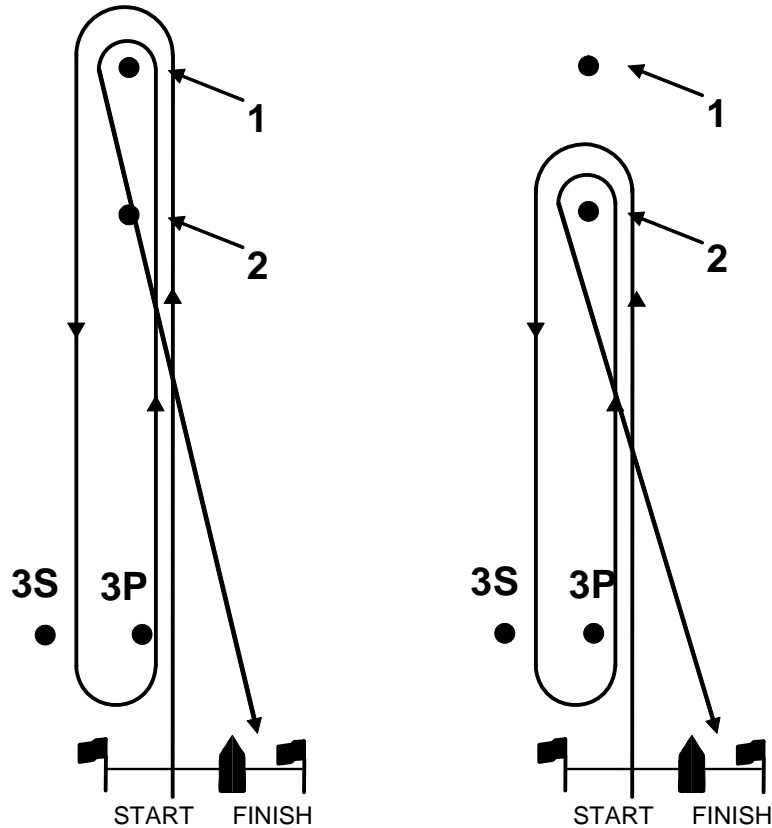
Attachment A – Racing Areas



Ullman Sails Long Beach Race Week

Attachment B – Buoy Racing Courses

Windward-Leeward Course (Short and Long leg course examples)

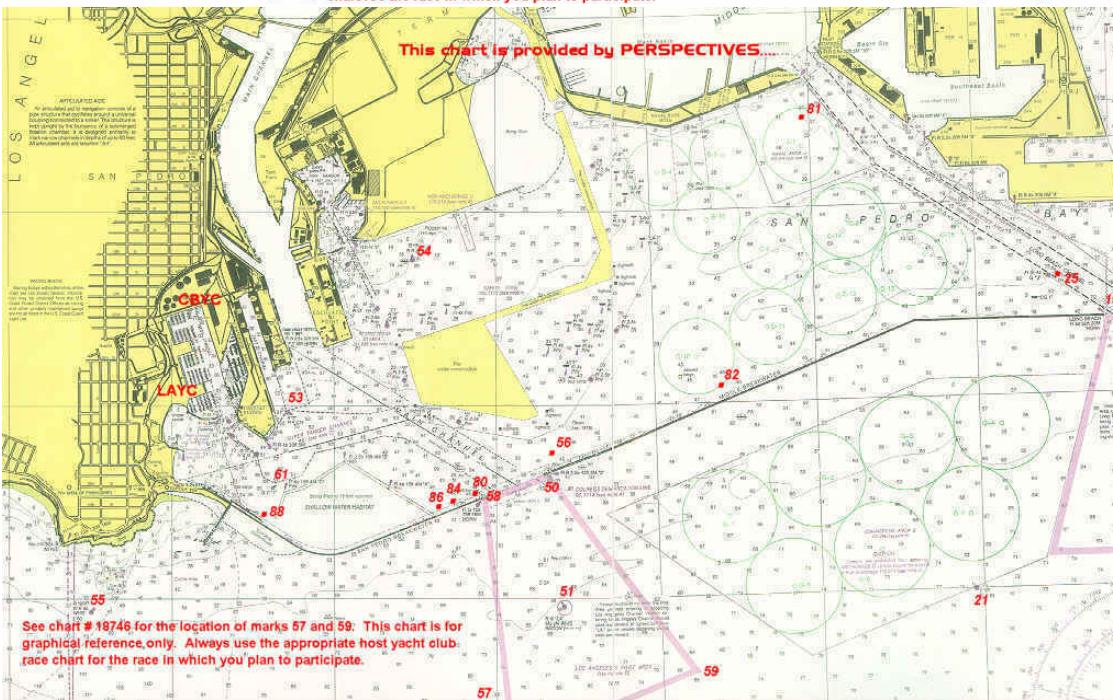
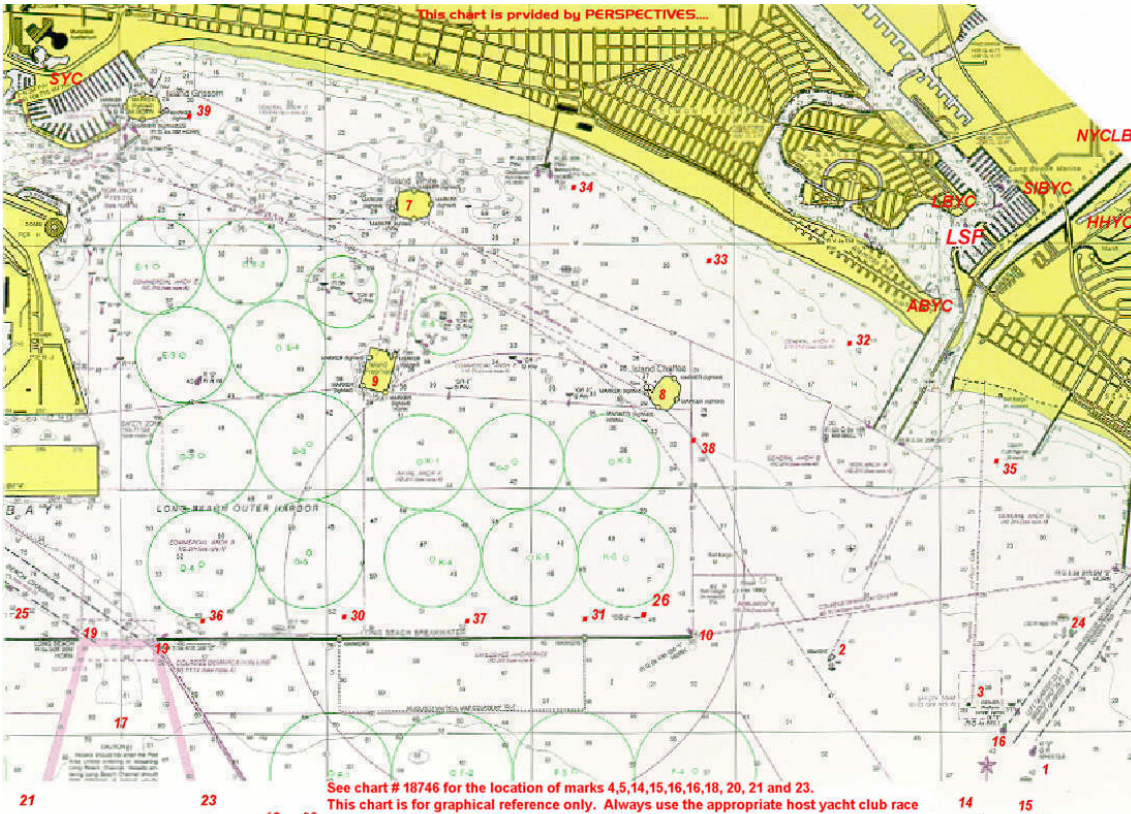


Course # Mark Rounding Order (all marks rounded to port)

1	(2 legs)	Start – 1 – Finish
2	(4 legs)	Start – 1 – 3 – 1 – Finish
3	(6 legs)	Start – 1 – 3 – 1 – 3 – 1 – Finish
4	(4 legs)	Start – 1 – 3 – 2 – Finish
5	(2 legs)	Start – 2 – Finish
6	(4 legs)	Start – 2 – 3 – 2 – Finish
7	(6 legs)	Start – 2 – 3 – 2 – 3 – 2 – Finish

Ullman Sails Long Beach Race Week

Attachment C – Random Leg Courses



Ullman Sails Long Beach Race Week

MARK	Mark Description	Latitude	Longitude
1	Anaheim Bay Channel Buoy - R "2" QR Whistle	33 42.920' N	118 06.550' W
4	Platform Eva	33 39.690' N	118 03.660' W
5	Platform Emmy	33 39.720' N	118 02.610' W
10	East End of Long Beach Breakwater	33 43.399' N	118 08.200' W
13	West End of Long Beach Breakwater - Queen's Gate	33 43.398' N	118 10.865' W
19	East End of Middle Breakwater	33 43.399' N	118 11.205' W
21	Yellow Lighted Buoy Y "B" FI Y 6 sec	33 42.015' N	118 12.050' W
23	Yellow Lighted Buoy Y "A" FI Y 4 sec	33 42.014' N	118 09.792' W
30	Spar Buoy - 100 yards north of West Measured Mile Marker	33 43.447' N	118 09.832' W
32	Spar Buoy - Spar Buoy - 1/2 mile NW from the West End of the Alamitos Bay Jetty, 500 yards off the beach	33 43.664' N	118 07.637' W
33	Spar Buoy - 1 mile NW of West End of Alamitos Bay Jetty, 350 yards off the beach	33 44.963' N	118 08.088' W
35	Spar Buoy - 600 yards west from the end of Seal Beach Municipal Pier	33 44.085' N	118 06.907' W
50	West End of the Middle Breakwater - Angel's Gate	33 42.513' N	118 15.096' W
55	Point Fermin Whistle Buoy - R "6" FI R 4sec Whistle	33 41.900' N	118 17.500' W

All locations are approximate.

Course #	Distance	Mark Rounding Order (all marks rounded to port)
21	21.0	Start – 30s – 13 – 19s – 55 – 1 – 30s – Finish
22	18.7	Start – 30s – 13 – 23 – 4 – 5 – 30s – Finish
23	16.5	Start – 30s – 50 – 21 – 10 – 32 – 30s – Finish
24	15.2	Start – 30s – 13 – 19s – 55 – 50s – Finish
25	16.3	Start – 30s – 50 – 10 – 33 – 30s – Finish
26	20.6	Start – 30s – 55–35– 30s – Finish
27	25.0	Start – 30s – 50 – 21 – 4 – 5 – 10 – 30s – Finish