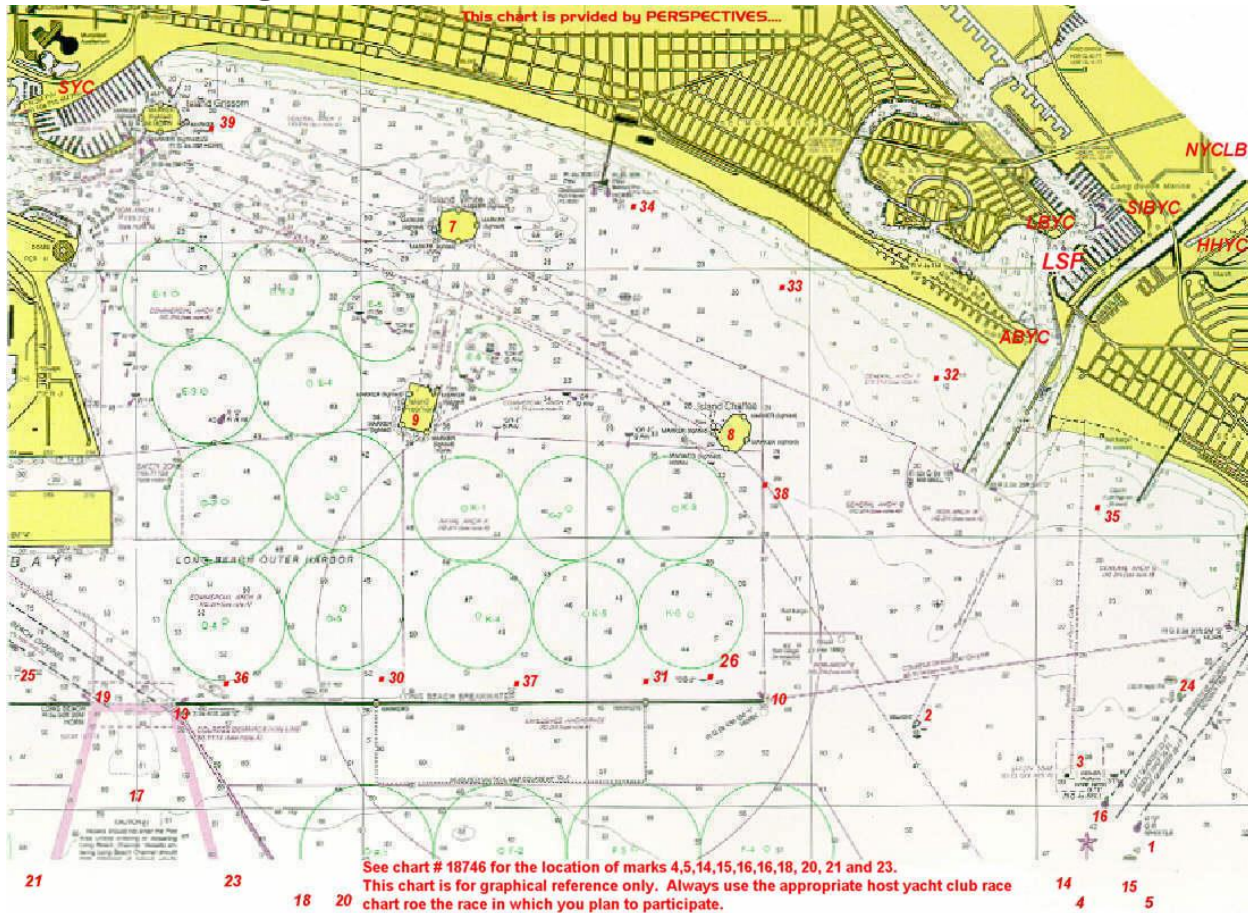
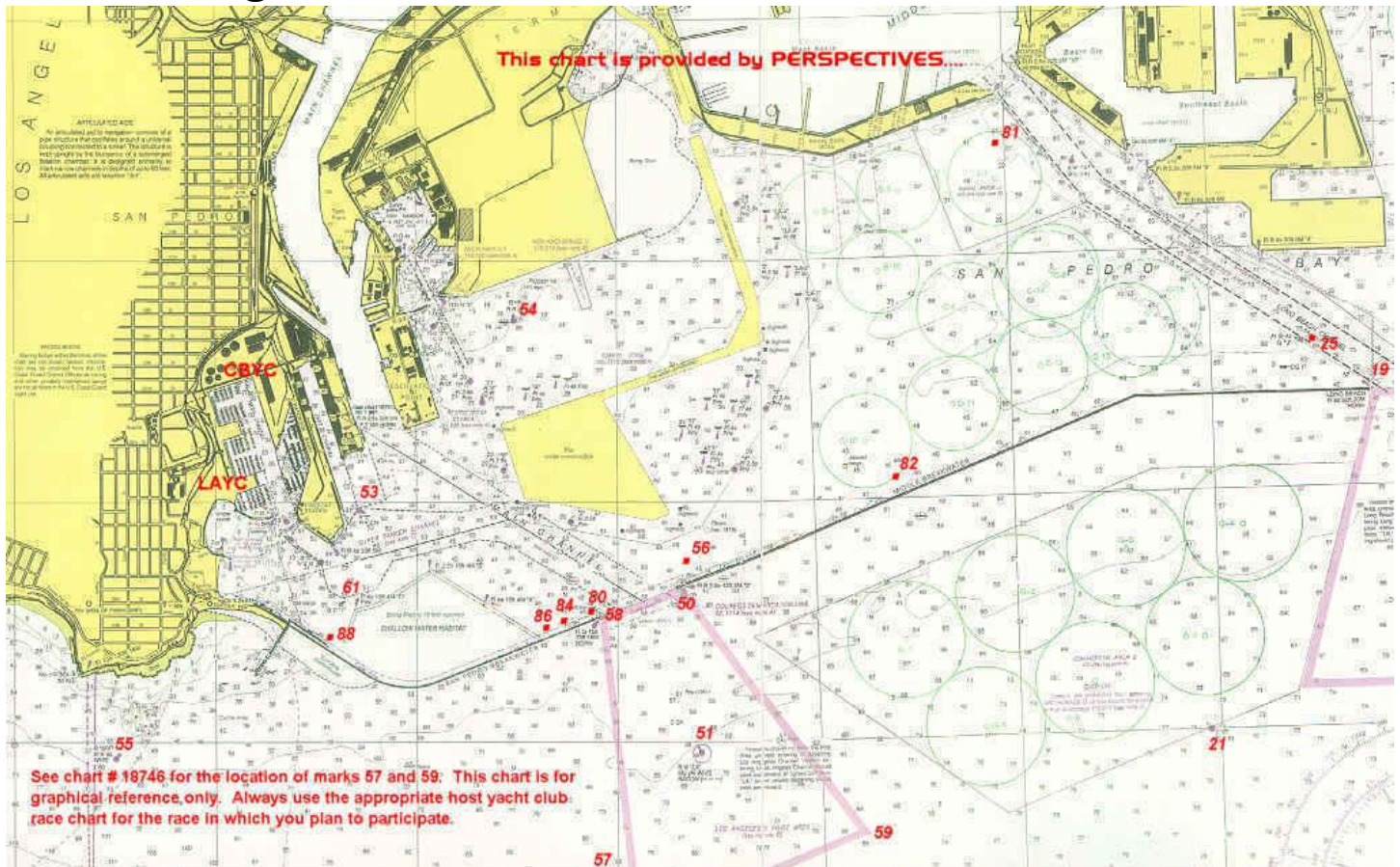


Random Leg – LB Harbor Chart (see reverse side for descriptions & locations)



Random Leg – LA Harbor Chart (see reverse side for descriptions & locations)



Random Leg – Mark descriptions & locations

MARK	Mark Description	Latitude	Longitude
Start Finish	Alpha Course Race Committee (Approx)	33°43'5.67"N	118° 7'2.26"W
1	Anaheim Bay Channel Buoy - R "2" QR Whistle	33°42'55.26"N	118° 6'33.41"W
3	Platform Ester	33°43'7.10"N	118° 6'51.20"W
4	Platform Eva	33°39'42.25"N	118° 3'43.37"W
5	Platform Emmy	33°39'43.20"N	118° 2'36.60"W
7	Island White	33°45'9.38"N	118° 9'35.77"W
8	Island Chaffee	33°44'23.09"N	118° 8'20.73"W
9	Island Freeman	33°44'28.40"N	118° 9'44.60"W
10	East End of Long Beach Breakwater	33°43'22.56"N	118° 8'8.56"W
13	West End of Long Beach Breakwater "Queen's Gate"	33°43'22.90"N	118°11'8.90"W
18	Platform Ellen & Elly	33°34'57.00"N	118° 7'42.00"W
19	East End of Middle Breakwater	33°43'22.90"N	118°11'8.90"W
20	Platform Edith	33°35'45.00"N	118° 8'27.00"W
21	Yellow Lighted Buoy Y "B" FL Y 6 sec 1.6 miles, bearing 193 magnetic, from the East End of the Middle Breakwater.	33°42'0.91"N	118°12'3.02"W
23	Yellow Lighted Buoy Y "A" FL Y 4 sec 1.6 miles, bearing 134 magnetic, from the West End of the LB Breakwater.	33°42'0.26"N	118° 9'47.07"W
27	R "2" Buoy near Pier J	33°44'26.56"N	118°10'38.00"W
50	West End of the Middle Breakwater - Angel's Gate	33°43'36.84"N	118°11'45.00"W
55	Point Fermin Whistle Buoy - R "6" Fl R 4sec Whistle	33°41'55.70"N	118°17'30.00"W
58	East End of the San Pedro Breakwater Angel's Gate	33°42'29.37"N	118°15'3.69"W
59	Traffic Lane Buoy Y "W" Fl Y 6 sec.	33°37'8.10"N	118°17'33.06"W

1. Mark locations vary slightly due to tide changes which affects swing.
2. Marks may not be on station for various reasons.
3. The Spar Buoys are Yellow.
4. Locations and distances, when given are approximate
5. Chart references: No's, 18746 & 18749