

# Ullman Sails Long Beach Race Week

June 23 – 25, 2017

Alamitos Bay Yacht Club & Long Beach Yacht Club

Long Beach, California USA

<http://www.lbrw.org>



**ULLMAN SAILS LONG BEACH RACE WEEK INCLUDES THE FOLLOWING CHAMPIONSHIPS**

**CATALINA 37 NATIONAL CHAMPIONSHIP**

**SCHOCK 35 PACIFIC COAST CHAMPIONSHIP**

**J/70, J/80, J/105, J/109 AND J/120 SOUTHERN CALIFORNIA HIGH POINT SERIES**

## NOTICE OF RACE

The Organizing Authorities for Long Beach Race Week will be the Alamitos Bay Yacht Club (ABYC), 7201 East Ocean Blvd, Long Beach, CA 90803 and the Long Beach Yacht Club (LBYC), 6201 Appian Way, Long Beach, CA 90803.

*The notation '[DP]' in a rule in the NOR means that the penalty for a breach of that rule may, at the discretion of the protest committee, be less than disqualification.*

### 1. RULES

- 1.1. The Regatta will be governed by the rules as defined in *The Racing Rules of Sailing*.
- 1.2. PHRF classes must carry the safety equipment required by the U.S. Safety Equipment Requirements for U.S. Nearshore Races (Definition 1.0.3). Refer to: <http://www.ussailing.org/safety/equipment-and-requirements/>.
- 1.3. For PHRF classes, the Marine Industry Racer (MIR) rule of PHRF of Southern California will not apply to this regatta.
- 1.4. The Catalina 37 Fleet will be subject to on-the-water umpiring according to Racing. Rule Addendum Q.
- 1.5. Appendix T, Arbitration, will apply.
- 1.6. Appendix V, Rule V1, Penalty At The Time Of An Incident, will apply.
- 1.7. Appendix V, Rule V2, Penalty Taken After A Race, will apply

### 2. ADVERTISING

- 2.1. For boats of the Catalina 37 class, the SIs state that advertising may not be added to or removed from any equipment supplied with the boat from Long Beach Sailing Foundation. [DP]

### 3. ELIGIBILITY AND ENTRY

- 3.1. This regatta is open to the following **One-Design classes**: Catalina 37, Farr 40, J105, J/109, J/120, J/24, J/70, J/80, Melges 20, Open 5.70, Viper 640, Schock 35. Additional One-Design classes will be accepted at the discretion of the Organizing Authorities based on the number of entries and the classes that are established. Submit requests to [info@lbrw.org](mailto:info@lbrw.org).
- 3.2. **One-Design classes** not having five (5) entries by June 21, 2017 shall be automatically registered in a PHRF class, if applicable, unless permitted otherwise by the Organizing Authorities.
- 3.3. This regatta is open to **Performance Handicap Racing Fleet (PHRF)** boats having a PHRF handicap of 222 or less. PHRF boats will be separated into classes based on entries received and performance characteristics of the boats.
- 3.4. This regatta is open to **Ocean Racing Catamaran Association (ORCA)** boats wishing to sail random leg courses.
- 3.5. **PHRF** boats wishing to sail random leg courses should indicate so on their entry form.
- 3.6. Eligible boats must enter online at <http://www.lbrw.org>.
- 3.7. An early entry discount as shown in NOR 4 applies to entries received on or before **June 5, 2017**. To receive the discount, the

# Ullman Sails Long Beach Race Week

Organizing Authorities must receive a completed online entry form with the appropriate fee and attachments by that date. **No entries will be accepted after 1800 PST, Tuesday, June 20, 2017** without the approval of the Principal Race Officer.

- 3.8. This regatta will be a level C regatta for the J/105 class as defined by Membership and Eligibility rule 3.6 of the J/105 Class Association Rules.
- 3.9. **PHRF Class Breaks:** In an effort to provide 'like racing' under **PHRF**, boat displacement and other factors will be considered when determining class breaks.

## 4. FEES

Required Fees are as follows:

LOA	Early Entry on or before June 5, 2017	Standard Entry
<b>30 Feet and Under</b> including J/29, J/70, J/80, Open 5.70, Viper 640 & PHRF	<b>\$210</b>	<b>\$260</b>
<b>31-40 Feet</b> including Farr40, J/105, J/109, J/120, Schock 35, & PHRF	<b>\$280</b>	<b>\$330</b>
<b>41-50 Feet</b> including PHRF	<b>\$360</b>	<b>\$410</b>
<b>Over 50 Feet</b> including PHRF	<b>\$410</b>	<b>\$460</b>
<b>Catalina 37</b>	<b>\$280</b> +charter fee	<b>\$330</b> +charter fee

+Catalina 37 charters see NOR 16.

If an individual cancels their participation in race week, then the refund policy is as follows:

- Notice period of Cancellation - Greater than 24 hours: 100% refund of the entry fee less administrative fee of \$50
- Notice period of Cancellation - Less than 24 hours or failure to attend: No refund after June 21, 2017

A boat's LOA should be rounded to the lower whole number (e.g. 35' 8" = 35') to determine fees. There will be no social fee.

Your entry fee includes the following:

- Entry to Long Beach Race Week
- ABYC Friday After Race Party, including music, complimentary hors d'oeuvres and no host bar
- LBYC Saturday After Race Party, including a music, Mt Gay Rum Party, complimentary hors d'oeuvres and no host bar
- Sunday Trophy Presentation Party, including complimentary hors d'oeuvres and no host bar

## 5. SCHEDULE

- 5.1. Registration at LBYC:  
*Thursday June 22, 2017 From 1200 to 1800*  
*Friday June 23, 2017 From 0800 to 1000*
- 5.2. Measurement, Inspection and Crew Weigh-In at LBYC:  
*Thursday June 22, 2017 From 1200 to 1800*  
*Friday June 23, 2017 From 0800 to 1000*
- 5.3. Competitors' Briefing at LBYC:  
*Friday June 23, 2017 From 1030 to 1100*
- 5.4. Dates of Racing:  
*Friday June 23, 2017 1<sup>st</sup> Warning 1255*  
*Saturday June 24, 2017 1<sup>st</sup> Warning 1155*  
*Sunday June 25, 2017 1<sup>st</sup> Warning 1155*

## 6. MEASUREMENTS

- 6.1. Crew weigh-in is required for One Design classes whose rules specify crew weight limits. The classes include Farr 40 and J/105.
- 6.2. All boats are subject to additional measurement at any time.
- 6.3. Following each day's racing any boat may be inspected for compliance with their handicap certificate.

## 7. SAILING INSTRUCTIONS

- 7.1. Sailing Instructions (SIs) will be available at registration.
- 7.2. Preliminary SIs will be available on the Long Beach Race Week website <http://www.lbrw.org>.
- 7.3. The Organizing Authorities reserve the right to amend versions of the SIs on the website without prior notice.

## 8. VENUE

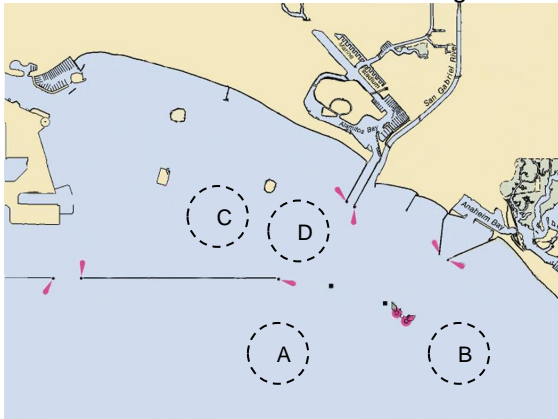
- 8.1. The ABYC ★ and LBYC ★ are located on Alamitos Bay, which is situated in the southeastern part of Long Beach California. The diagram below shows locations of the two clubs in Alamitos Bay.

# Ullman Sails Long Beach Race Week

8.2.



8.3. It is anticipated that there will be three (3) separate racing areas, each with its own race committee. As entries and class splits are not known in advance, it is not possible to assign racing areas in advance. The diagram below shows the location of the racing areas.



## 9. THE COURSES

- 9.1. The courses for One-Design and PHRF classes will be of a windward leeward configuration.
- 9.2. The courses for the Random Leg fleet will be selected from those published in the Sailing Instructions. Those courses will include a variety of course lengths around marks and landmarks in San Pedro Bay area, both inside and outside the Federal breakwater.

## 10. SCORING

- 10.1. Seven (7) races are scheduled of which three (3) must be completed to constitute a series for the One-Design, and PHRF classes.
- 10.2. Random Leg Fleets: Three (3) races are scheduled of which one (1) must be completed to constitute a series.
- 10.3. The regatta will be scored as provided in the RRS except that all a boat's race scores will count (i.e. no scores will be excluded).

- 10.4. PHRF Classes will be scored using the base handicaps provided by the PHRF Southern California. All PHRF Classes will be scored using time-on-time scoring. For each boat, the "Time Correction Factor" (TCF) used will be calculated based on the following formula:  $TCF = 650 / (625 + PHRF)$  where "PHRF" is a boat's base SoCal PHRF handicap.

## 11. BERTHING

- 11.1. Alamitos Bay Marina
  - a) Boats requesting berthing **MUST** contact the LBYC Waterfront Director for further information: 562-493-5173 or e-mail [raceoffice@lbyc.org](mailto:raceoffice@lbyc.org).
  - b) The number of transient slips and dock space available in Alamitos Bay Marina is limited. Rafting will be necessary and registration is required. Boats requiring a berth in Alamitos Bay Marina for Long Beach Race Week should indicate their intended arrival and departure dates on their online entry form.
  - c) Berthing assignments will be published on the Long Beach Race Week website. <http://www.lbrw.org> and available at registration.
  - d) Boats requesting berthing before Sunday, June 18, 2017 or after Tuesday, June 27, 2017 **MUST** contact the LBYC Waterfront Director for further information: 562-493-5173 or e-mail [raceoffice@lbyc.org](mailto:raceoffice@lbyc.org). Longer term storage is very limited and will be assigned on a first come basis.
- 11.2. Alamitos Bay Yacht Club Yard and Basin
  - a) Due to space limitations, vehicle parking on ABYC grounds is restricted. Off-street parking is available across the street in municipal lots.
  - b) Visiting competing boats may request extended storage **IN ADVANCE** by contacting the ABYC office. The cost is \$10.00 per day paid in advance. Please note ABYC is closed on Monday and Tuesday.
  - c) Any boat or trailer found on ABYC property without prior written authorization from ABYC is subject to impound and associated fees.
  - d) Boats requesting yard storage before Sunday, June 18, 2017 or after Tuesday, June 27, 2017 **MUST** contact the ABYC Office for further information: 562-434-9955 or e-mail [abyc@abyc.org](mailto:abyc@abyc.org).

# Ullman Sails Long Beach Race Week

## 12. RADIO COMMUNICATION

- 12.1. The Race Committee will make use of VHF radios to keep sailors informed of Start Times, On Course Side (OCS), Postponements and other information regarding the racing.
- 12.2. Failure of the Race Committee to hail, failure of the amplification system or radios, the order of the hail, or failure of a boat to hear a hail shall not be grounds for a boat to request redress. This instruction changes RRS 41 and 62.1.

## 13. PRIZES

- 13.1. Boat of the Day and daily awards to winners of Friday and Saturday racing in each established fleet will be presented.
- 13.2. Overall series awards will be presented to each established fleet.
- 13.3. The following prizes will be presented to individual boats:

---

### Satariano Boat of the Week

To the class winner whose class featured the closest, most competitive racing for the series

---

### PHRF Boat of the Week

To the PHRF class winner whose class featured the closest, most competitive racing for the series

---

### Catalina 37 National Championship

Winner of the Catalina 37 class

---

### Schock 35 Pacific Coast Championship

Winner of the Schock 35 class

---

### Kent Golison Family Trophy

Highest placing boat in the regatta that is sailed by at least three members of an immediate family

---

### Travel Trophy

Boat owner who has traveled the farthest (based on hometown)

---

### Yacht Club Challenge

The yacht club whose team has the lowest combined score. One yacht on each team must compete in the Catalina 37 class. A yacht club may enter up to three (3) individual teams using a single Catalina 37 entry for multiple teams.

## 14. DISCLAIMER OF LIABILITY

Competitors participate in this regatta entirely at their own risk. See RRS 4, Decision to Race. The Organizing Authorities will not accept liability for material damage or personal injury or death sustained in conjunction with or prior to, during or after this regatta.

*\* Informational note: The United States Coast Guard (USCG) requires that all vessels carry a USCG approved personal floatation device for each member of the crew on a boat.*

## 15. RIGHT TO USE NAME AND LIKENESS

By participating in the Long Beach Race Week a competitor automatically grants to the organizers and its sponsors the right in perpetuity to make, use and show, from time to time at their discretion, any motion pictures and live, taped or filmed television and other reproductions of him or her during the period of the competition without compensation.

## 16. CHARTERED BOATS

Catalina 37 boat chartering will be on first-come first-served basis. Please note that your reservation is not secured until your full entry/charter fee is paid to the regatta per NoR sections 3 and 4. For information about chartering from Long Beach Sailing Foundation, or to make a reservation, please contact:

Charter Manager: Mary Voigt

Phone: (760) 568-2163

Email: [chartermanager@lbycsf.org](mailto:chartermanager@lbycsf.org)

## 17. HOSPITALITY AND SOCIAL

Information for local hotels can be found at the Long Beach Race Week website. <http://www.lbrw.org>

## 18. AMENDMENTS TO THIS NOTICE

The Organizing Authorities reserves the right to amend this notice. Any amendments of this notice made after May 1, 2017 will be posted on the Long Beach Race Week website and e-mailed to those owners whose entries have been accepted.

## 19. QUESTIONS / CONTACT

Please email questions to: [info@lbrw.org](mailto:info@lbrw.org).